

Historic, archived document

Do not assume content reflects current scientific knowledge, policies, or practices.

22,29

LEWIS
RECEIVED
★ JUL 23 1942 ★
U. S. Department of Agriculture

RUGGED KANSAS GROWN



LINWOOD
IRIS
GARDENS

1939

3425 West Central Avenue
WICHITA • KANSAS

Terms of Sale

Delivery Free on orders of \$1.00.

Smaller orders 15c extra. All transportation charges to be paid by purchaser on all foreign orders.

Sales Tax must be included on all orders in the state of Kansas.

Time of Delivery: I recommend planting between July 15 and October 1. However, orders will be filled any time during the season until the ground freezes, with the exception of the month of May which is our blooming season.

Guarantee: My guarantee is, *you must be pleased.* If you are not satisfied after opening the package return it to me at my expense. There will be no quibbling over details, and your return postage will be refunded. All plants guaranteed true to name and free from disease. There are no Iris borers in this section. I grow my own plants, and every order is filled with the utmost care.

Substitutions: I will not substitute unless given permission to do so. However, it is impossible to keep a stock of Iris complete during an entire season and it is very satisfactory both to customer and dealer to make a second choice, and to encourage this I will include a beautiful Iris free of charge in every order that names two or more substitutes.

BLANCHE COVERT
OWNER OF
LINWOOD IRIS GARDENS
3425 WEST CENTRAL
WICHITA, KANSAS
MEMBER OF
AMERICAN IRIS SOCIETY

Rugged Kansas Grown Iris

Probably some time in the past most of you have ordered Iris which from the ad or price list appeared to be a nice bargain. When the tiny dried rhizomes arrived I know well how you felt. If they lived at all it took two or three years to produce a puny bloom stalk. Now my point is this. Please do not confuse my Iris with such inferior plants. Read my guarantee, the guarantee I have been operating under for years.

From the very lowest priced variety to the newer ones, this guarantee of quality always applies.

June 1st is moving day. My city address will then be 3425 W. Central. However, this will in no way affect my Iris as the main field is located about seven miles out of Wichita. Care was taken last fall to reset any varieties which were becoming crowded. All reset Iris are growing extra well this spring, and this season will see some of the largest healthiest, and free from disease Iris any dealer has ever been able to supply.

In appreciation of the fine testimonials and friendly messages from my customers everywhere, I take this method of expressing my sincere thanks and saying best of luck to each and every one of you.

If you'd have a mind at peace
A heart that cannot harden
Go find a door that opens wide
Upon a little garden.

—E. M. Boulton.

SURE TO PLEASE COLLECTION

60 strong blooming size rhizomes, every one different, unlabeled, for only \$2.00

This collection will be shipped by express, charges collect.

In this group will be included odds and ends of many fine varieties not usually sold in this manner.

Early Dwarf Iris

MESSENGERS OF SPRING

One of the most interesting groups of the Iris family. Often these little fellows will be seen welcoming the first spring days even before the snow is entirely gone. They should be used liberally in the sunny rock garden and are fine border plants for hardy perennial beds or walks. Blooming period covers about five weeks just ahead of the intermediate group.

- ATROVIOLACEA**—5 in. A perfect little gem of richest red violet. 12 for 50c. Each 10c
- AZUREA**—4 in. A charming little floweret of dainty sky blue. 2 for 25c. Each 15c
- BRIDE**—10 in. A very pretty dainty white. 3 for 25c. Each 10c
- CYANEA**—7 in. Finest large flowered dark blue. 12 for 50c. Each 10c
- DIXMUDE**—8 in. S. Analine blue; F. rich carmine purple. Very attractive. 2 for 25c. Each 15c
- JEAN SIRET**—8 in. A trim yellow flower with vivid orange beard. (A fall bloomer) 2 for 25c
Each 15c
- PUCK**—8 in. The reddest purple dwarf. Bright yellow beard. 3 for 25c. Each 10c
- ROSE MIST**—10 in. A very pretty pinkish lilac, with falls a shade redder. Something different. 2 for 25c. Each 15c
- SHUSHAN (Pogocyclus)**—11 in. S. silky bright violet; F. velvety blackish purple. Burnt orange beard. VERY FRAGRANT. 2 for 25c. Each 15c
- SOUV. DE LIEUT. CHAVAGNAC** — 7 in. A stylish violet purple self. (A fall bloomer) 2 for 25c. Each 15c
- YELLOW FRILLS**—10 in. A charming new yellow with frilly petals. 2 for 25c. Each 15c

Tall Bearded Iris

- ABELARD (H. Sass)**—EARLY. S. reddish tan; F. velvety maroon. 26 in. 2 for 25c. Each..... 15c
- ALICE HARDING (Cay.)**—Tall satiny smooth light yellow. Dykes Medal in France 1933. Award of Merit A.I.S. 1937. Each\$1.00
- ALLIES (Vilm.)** — Large flowered rich dark bronzy red. 24 in. 3 for 30c. Each 15c
- ALPENGLow (Wmson.)**—Giant blossoms. S. mauve; F. plum color. Fine. 3 for 25c. Each... 10c
- AMANECER (Wmson.)**—Tall pink and yellow blend. Recommended. 3 for 25c. Each 10c
- AMBASSADOR (Vilm.)** — LATE. Magnificent large FRAGRANT flowers. S. rosy fawn; horizontal falls of darkest velvety maroon. 2 for 25c. Each 15c
- AMENTI (H. Sass)**—A fine new blend, of golden yellow and lavender blue. Each..... 50c
- AMERIND (And.)**—Coppery tan with a metallic sheen. Tall. LATE. 32 in. 3 for 50c. Each... 20c
- AMITOLA (H. Sass)**—S. light golden tan; F. Orchid Pink shading to yellow. One of the most fascinating of the new blends. 36 in. Each\$2.00
- AMNERIS (Mil.)** — LATE. Very stylish rich dark blue. Tall. Superb. 2 for 25c. Each 15c
- ANDANTE (Wmson.)** — Mammoth flowers of rich dark pansy purple. 30 in. 3 for 25c. Each 10c
- ANITRA (H. Sass)**—A grand new silvery blue. 36 in. Each\$3.00
- ANNDELIA (Sturt.)** — Ruffled and lovely. S. soft lilac pink; F. white, flushed and veined pink. 32 in. Recommended. 3 for 30c. Each ... 15c
- ANTARES (Vilm.)** — Large ruffled creamy white splashed with violet blue. 3 for 50c. Each 20c
- APACHE (Farr)**—A gem in radiant coppery red. 22 in. Don't miss it. 3 for 25c. Each..... 10c
- APHRODITE (Dykes)** — FRAGRANT. Tall deep pink. 3 for 25c. Each 10c
- ARLETTE (Cay.)**—LATE. A wax like cream colored self with orange beard. 3 for 25c. Each 10c
- ARLINGTON (Sim.)**—Large bold, pink to red toned bicolor. Tall. 2 for 25c. Each 15c
- ARGYNNIS (Wmson.)**—LATE. S. dark yellow; F. mahogany red. Tall. 3 for 25c. Each .. 10c
- ASIA (Yeld)**—LATE. A beautiful silvery lavender, blue and yellow blend. DELICIOUS FRAGRANCE. 3 for 25c. Each..... 10c

- AUTUMN GLEAM**—See fall bloomers.
- AUTUMN KING**—See fall bloomers.
- AUTUMN QUEEN**—See fall bloomers.
- AVATAR (Wmson.)**—S. fawn; F. pansy violet with a glowing golden heart. FRAGRANT. 3 for 25c. Each 10c
- BALDWIN (H. Sass)**—An immense manganese violet self of smooth enamel-like finish. 3 for 30c. Each 15c
- BALLERINE (Vilm.)**—Large light violet blue. Tall. FRAGRANT. 3 for 25c. Each 10c
- BALROUDOUR (J. Sass)**—A new strain of Iris, like an exquisite miniature orchid. S. soft blue; F. olive buff, splashed with gold and maroon. 12 in. EARLY and perfectly hardy. A little treasure. 3 for 25c. Each 10c
- BEAU IDEAL (J. Sass)**—Pure white with a solid half inch border of Chinese violet. 30 in. 3 for 25c. Each 10c
- BEAU SABREUR (Wmson.)**—S. yellow suffused rose; F. rich bronzy red. 2 for 25c. Each 15c
- BEOTIE (Cay.)**—A handsome gray and metallic blue blend of satiny smoothness. Beard light yellow. Very pleasing. Each 50c
- BLACKAMOOR (J. Sass)** — An elegant dark Iris. S. dark violet; F. blackish purple. Beard tipped blue. Each 25c
- BLACK WINGS (Kirk.)**—Another of the fine rich blackish purples. Each 25c
- BLUE BANNER (Kirk.)** — LATE. S. crisp light blue; F. rich dark blue with a light margin. Recommended. 3 for 25c. Each 10c
- BLUE BONNET (Egelb.)**—A tall striking two toned blue possessing many fine qualities. S. light blue; F. dark. 2 for 25c. Each 15c
- BLUE HILL (H. Sass)**—A pretty soft blue self with white throat and beard. Hon. Mention 1932. 2 for 25c. Each 15c
- BLUE MONARCH (J. Sass)**—A super Iris with elegant blossoms in a lovely shade of clear light blue. LATE. 3 for 50c. Each 25c
- BLUET (Sturt.)**—Dainty sky blue. Low. 3 for 25c. Each 10c
- BLUE TRIUMPH (Grin.)**—Tall, elegant light blue. Hon. Mention 1936. Each \$1.00
- BLUE VELVET (Loom.)**—Striking dark velvety blue with a vivid orange beard. 2 for 25c Each 15c
- BOADICEA (Nic.)**—LATE. S. light silky tan; F. yellow flushed heliotrope. Very pretty. 2 for 25c. Each 15c
- BONNIE BLUE (Sturt.)**—The bluest blue of all. Don't miss it. 26 in. 2 for 25c. Each 15c

- BRANGAENE (Mor.)**—S. coppery violet; F. velvety dark red. Large flowered and fine. 2 for 25c. Each 15c
- BRUNO (Bliss)**—S. fawn; F. plush-like reddish brown. Each 10c
- BURNING BRONZE (Ayers)**—A dandy deep bronzy red. Each \$1.50
- CALIFORNIA GOLD (Mit.)** — A marvelous deep yellow self, of finest quality. Hon. Mention 1936. Each \$2.00
- CAPT. COURAGEOUS (Row.)**—LATE. A tall handsome rose and smoke blend. 2 for 25c. Each 15c
- CAVATINA (Wmson.)**—Metallic blue and dove gray deftly blended with golden yellow. Late. FRAGRANT. 2 for 25c. Each 15c
- CHALICE (Sturt.)**—A clear lemon yellow self which does not fade. 3 for 25c. Each 10c
- CHALLENGER (J. Sass)**—EARLY. Velvety maroon purple. Very fine. 2 for 25c. Each 15c
- CHEERIO (Ayers)**—S. rose tan; F. like shimmering red velvet. Hon. Mention 1936. Each \$2.00
- CHEYENNE (Wmson.)**—A fine tall dark red blend. FRAGRANT. 3 for 25c. Each 10c
- CHROMYLLA (Loom.)** — A lovely iridescent yellow with bright orange beard. Award of Merit 1932. 3 for 50c. Each 25c
- CHURCHMOUSE (H. Sass)**—A rosy gray self. Pretty and unusual. 2 for 25c. Each 15c
- CINNABAR (Wmson.)**—One of the richest red purples. Silver Medal 1932. Tall. Recommended. 3 for 30c. Each 15c
- CLARA NOYES (H. Sass)**—Large ruffled coppery apricot with falls striped red. Very attractive. Award of Merit 1932. 3 for 25c. Each 10c
- CLARIBEL (J. Sass)**—Large satiny white flowers button-holed blue at edges. Golden orange beard. Tall, hardy and a distinctive beauty. Each \$1.00
- COCKATOO (Mor.)**—EARLY. A winsome soft yellow with frilled standards. 2 for 25c. Each 15c
- CORONATION (Moore)** — LATE. A splendid rich yellow self possessing many fine qualities. 3 for 25c. Each 10c
- COTTAGE WHITE (Egel.)** — Stylish waxy white. 3 for 25c. Each 10c
- CRIMSON KING (Barr)**—A large rich plum colored self. 3 for 25c. Each 10c
- CRUSADER (Foster)**—A beautiful large medium blue self. 2 for 25c. Each 15c
- CRYSORO (Nic.)**—EARLY. A deep dazzling yellow. 2 for 25c. Each 15c

- CRYSTAL BEAUTY (J. Sass)**—A magnificent hardy white. One of the world's best. 3 for \$1.50. Each 75c
- DAMOZEL (Mor.)**—Large snow white flowers strikingly peppered with violet. LATE. FRAGRANT. 3 for 30c. Each 15c
- DAY DREAM (Sturt.)**—LATE. A gorgeous rose colored blend. Each 10c
- DECENNIAL (Wmson.)**—S. bright picric yellow; F. Velvet carmine with a blue overlay. 3 for 40c. Each 20c
- DELACROIX (Cay.)**—Old gold and yellow. 3 for 25c. Each 10c
- DEPUTY NOMBLOT (Cay.)** — Dykes Medal 1930. A bronzy purple, golden chamois and claret red blend. Each 25c
- DESERET (Thor.)**—S. light frosty yellow; F. henna red, veined and edged with yellow. New and striking. Each 2.00
- DIR. PINELLE (Cay.)**—One of the grandest Irises of today. Massive blossoms of rich dark bronzy maroon. Tall. LATE. Each 1.75
- DOLLY MADISON (Wmson.)**—A beautiful enamel finished blend of rose and mauve. Golden heart and fiery orange beard. Each 10c
- DORCAS HUTCHESON**—See fall bloomers.
- DORE (J. Sass)**—Ruffled standards of glittering light yellow; Falls creamy white with golden heart and radiant deep orange beard. 36 in. Each \$1.00
- DOROTHY DIETZ (Wmson.)**—Silky pale blue S. in sharp contrast to the rich pansy purple falls. A distinctive beauty. Each 25c
- DOUGLAS (J. Sass)**—A serene beauty of huge size and finest form. S. light lavender; F. litho purple shading to lavender at margins. Beard yellow. Each 50c
- DOXA (H. Sass)**—EARLY. Extra large fine flowers of novel coloring. Pongee color with F. flushed and veined olive green and purple. Deep orange beard. 20 in. Hon. Mention 1932. 2 for 25c. Each 15c
- DR. CHAS. H. MAYO (Fryer)** — Smooth rich pink with a white throat. VERY FRAGRANT. Tall. 3 for 25c. Each 10c
- DREAM (Sturt.)**—Tall delicate pink. 3 for 25c. Each 10c
- DUKE OF BEDFORD (Bliss)**—Tall, dark rich purple. 3 for 25c. Each 10c
- DUKE OF YORK (Per.)**—Large silvery lavender blue. GRAPE FRAGRANCE. 3 for 25c. Each 10c
- EDGEWOOD (Hall)**—A striking pinkish red bicolor of giant size. A grand Iris. 2 for 25c. Each 15c

- ELEANOR ROOSEVELT**—See fall bloomers.
- ELECTRA** (J. Sass) — A perfectly hardy new plicata of real merit. A large bold white flushed and dotted lavender blue. Broad yellow beard and brown venations at haft. Tall. Each 50c
- ELSINORE** (Hall) — Dainty primrose yellow with tips dipped reddish lilac. 3 for 25c. Each 10c
- ENDYMION** (Sturt.)—A tall golden buff blend with a metallic overlay. 3 for 25c. Each 10c
- ESPLENDIDO** (Mohr.)—A fine tall purplish red. 3 for 25c. Each 10c
- ESTREL** (Eddl.)—A lovely warm deep pink blend of good size and quality. 3 for 30c. Each 15c
- EUPHONY** (H. Sass)—A distinctive ruffled flower shading from deepest yellow to bronze. F. flushed lilac; vivid red orange beard. 3 for 30c. Each 15c
- EVENTIDE** (H. Sass)—A hazy lilac self, minutely veined with violet. Similar in color to Wm. Mohr. Each 10c
- FARANDOLE** (Cay.)—Giant blossoms of unusual beauty. S. French gray flushed rose at center; F. blended rose, with a broad margin of gray. Each 20c
- FAR WEST** (Klein.)—A gorgeous new blend of golden fawn and rose, with a hint of lavender at the tips of a golden beard. Each \$6.00
- FIREFALL** (Essig)—Rich colorful red. 30 in. 3 for 25c. Each 10c
- FLAMINGO** (Wmson.)—A large warm reddish rose with a brilliant beard. 2 for 25c. Each ... 15c
- FOLKWANG** (G. & K.) — LATE, long blooming and EXTREMELY FRAGRANT. S. white faintly tinted pink; F. claret red with a white margin. Lovely. 3 for 25c. Each 10c
- FORSETTE** (G. & K.) — Another good blue a little lighter than Wedgewood. 3 for 25c. Each 10c
- FRAGONARD** (Cay.)—A rich mellow rose colored self of exceptional beauty. A complement to any garden. 2 for 25c. Each 15c
- FRANKLIN ROOSEVELT**—See fall bloomers.
- FRIEDA MOHR** (Mohr.) — One of the finest pink toned Irises ever introduced. Massive flowers with broad flaring falls. Tall. VERY FRAGRANT. 2 for 25c. Each 15c
- GANDVIK** (G. & K.)—S. light lavender; F. dark blue edged lavender. You'll like it. 3 for 30c. Each 15c
- GENTIUS** (H. Sass) — EARLY. A handsome new deep blue purple to plant with your early yellows. Hon. Mention 1936. 3 for 30c. Each ... 15c
- GEO. J. TRIBOLETT** (Wmson.)—Blackish purple overlaid bronze. 3 for 25c. Each 10c

- GEORGIA (Farr)**—EARLY. Deep orchid pink. 3 for 25c. Each 10c
- GERMAINE PERTHIUS (Mil.)**—A handsome mulberry purple with broad F. and striking orange beard. FRAGRANT. 3 for 25c. Each .. 10c
- GIANT BALDWIN (H. Sass)**—Gigantic flowers of rosy manganese violet. Tall, rugged and really fine. 2 for 25c. Each 15c
- GILEAD (And.)**—A gorgeous metallic blend of bronze, buff, and gold. A superb Iris from every angle. VERY LATE. 3 for 50c. Each .. 20c
- GLEAM (Nic.)**—A lovely clear light blue with vivid orange beard and a gleam of gold at heart. 2 for 25c. Each 15c
- GLOWING EMBERS (Sturt.)**—VERY LATE. Tall. S. rich warm tan; F. bronzy mahogany brown. 2 for 25c. Each 15c
- GOLDEN BOW (H. Sass)**—A sensational new EARLY yellow. Large fine flowers of pure rich yellow with a deep orange beard. 32 in. Each 25c
- GOLDEN GLORY (Jack.)**—A pretty soft golden yellow with falls a shade deeper. 3 for 25c. Each 10c
- GOLDEN HELMET (J. Sass)**—One of the most brilliant of the fiery red browns. S. coppery gold; F. velvety oxblood red. Each \$1.50
- GOLDEN LIGHT (H. Sass)**—A tall dazzling beauty in glorious shades of coppery gold, pink and cinnamon. An Iris you can't forget. 3 for \$1.00. Each 50c
- GOLDEN WEST (J. Sass.)**—EARLY. A new deep waxy yellow with striking orange beard. Very good. 2 for 25c. Each 15c
- GOLDILOCKS (Way.)**—Silky light yellow with a handsome orange beard. Extra large and SWEETLY FRAGRANT. 3 for 25c. Each 10c
- GOLD IMPERIAL (Sturt.)**—A satiny smooth, rich chrome yellow with beautiful bright orange beard. 3 for 25c. Each 10c
- GRACE STURTEVANT (Bliss)**—A striking velvety chocolate brown, illuminated by a brilliant orange beard. FRAGRANT. Recommended. 2 for 25c. Each 15c
- GRETCHEN (H. Sass)**—S. white; F. bright rose attractively veined with red. A fascinating type. 2 for 25c. Each 15c
- HAPPY DAYS (Mit.)**—Just as cheerful as it sounds. A gorgeous clear yellow giant, enriched by a deep chrome beard. A tall heavy bloomer. Hon. Mention 1935. Each \$1.75
- HAVAMAL (G. & K.)**—S. cream; F. violet blue with a wide cream border. Fine size and form. You'll like it. 2 for 25c. Each 15c

- HELIOS (Cay.)**—Enormous flowers of luminous soft lemon yellow. A tall superfine Iris. Recommended. 3 for 50c. Each 20c
- HUSSARD (Vilm.)**—VERY LATE. A most desirable satiny light blue. 3 for 25c. Each 10c
- HYACINTHUS (Wmson.)**—Tall, fine bronzy brown blend. 3 for 25c. Each 10c
- IDEAL (Cay.)**—One of the prettiest true blues. A much needed color. 26 in. 3 for 25c. Each... 10c
- IMPERIAL BLUSH (H. Sass)**—An extra large, delicately tinted, iridescent pink with a beautiful soft yellow beard. Hon. Mention 1936. Each 35c
- INDIAN CHIEF (Ayers)**—A rich and lovely red of excellent garden value. Tall, rugged and fine. 3 for 25c. Each 10c
- IRIS KING (G. & K.)**—One of the best in this color group. S. old gold; F. velvety garnet brown with a gold margin. Large. 3 for 25c. Each 10c
- IRMA POLLOCK (H. Sass)**—A fine large flowered showy red. Each 20c
- JACK ROSE (And.)**—A striking, tall, deep palida red. Very FRAGRANT. 3 for 25c. Each.. 10c
- JACQUELLINE GUILLOT (Cay.)** — VERY LATE. One of the loveliest of the huge light blues. Cool and charming, with a frost-like iridescence and a pure white beard. FRAGRANT. 2 for 25c. Each 15c
- JANE WILLIAMSON (Wmson.)**—Tall exquisite pink pastel blend. 3 for 25c. Each 10c
- JEAN CAYEUX (Cay.)** — LATE. Glistening golden tan with falls delicately flushed rosy lilac. Dykes Medal France 1931. Award of Merit 1936. Each 65c
- JEB STEWART (Wash.)**—S. dark bronze; F. dark mahogany red with lemon beard. Hon. Mention 1933. Award of Merit 1935. Each \$1.75
- JUBILEE (J. Sass)**—S. peach; F. cream. Both S. and F. peppered coppery violet. A delightful, ruffled novelty. 3 for 25c. Each 10c
- JULIA MARLOWE (Shull)**—Large red toned self. Tall. FRAGRANT. 3 for 25c. Each 10c
- JUNALUSKA (Kirk.)**—A gorgeous coppery red blend with golden heart and bright orange beard. 36 in. Each \$2.50
- KALOS (Sass.)**—Daintily ruffled and the most delicate pink imaginable. 3 for 25c. Each 10c
- KANSAS (Tim.)** — VERY LATE. Huge blossoms of orchid pink with graceful wavy edges. Tall. 2 for 25c. Each 15c
- KING JUBA (H. Sass.)**—S. pure deep yellow with broad flaring falls of dark velvety maroon. Brilliant and fine. Hon. Mention 1932. 2 for 25c. Each 15c

- KING KARL (J. Sass)**—Stylishly frilled, with S. of pinkish cinnamon; F. cream heavily dotted bronze. Award of Merit 1931. 2 for 25c. Each 15c
- KING MIDAS (Meade)**—S. burnished gold; F. garnet red flushed mauve and shading to a golden margin. Bright orange beard. Very fine. 2 for 25c. Each 15c
- KING TUT (H. Sass)**—Richest red brown with fiery golden bronze standards. Everyone should have King Tut. 2 for 25c. Each 15c
- KLAMATH (Klein.)**—A lovely giant, of splendid form and finish. A bronze and violet bicolor with golden brown beard. A real Iris. FRAGRANT. 2 for 25c. Each 15c
- LADY BYNG (Bliss)**—A lustrous rosy lavender which does not fade. 3 for 25c. Each 10c
- LADY PARAMOUNT (White)** — Large long blossoms of soft primrose yellow. Hon. Mention 1932. Award of Merit 1936. Each \$1.75
- L'AIGION (Shull)**—A handsome light bronzy red toned bicolor with excellent qualifications. 2 for 25c. Each 15c
- LE CORREGE (Vilm.)** — LATE. A darker, richer Ambassadeur. FRAGRANT. 2 for 25c. Each 15c
- LENT A. WILLIAMSON (Wmson.)** — Huge, blended bronzy violet bicolor. 3 for 25c. Each 10c
- LENSCHNEE (G. & K.)** — Handsome white flushed soft blue at heart. 3 for 25c. Each 10c
- LINDBERG (Arb.)**—LATE. A charming blue bicolor. S. light blue; F. blue purple with a dainty light blue margin. Tall. 2 for 25c. Each 15c
- LOCHINVAR (H. Sass)**—A bold handsome Iris of stylish form. Huge flowers in a beautiful shade of light violet. Tall and rugged. Each ... 10c
- LONA (J. Sass)**—Probably the most popular of the ruffled, speckled group. S. exquisite peachy pink; F. cream, striped and speckled with violet. 3 for 25c. Each 10c
- LORD LAMBOURNE (Per.)**—EARLY. S. coppery fawn flushed rose; F. rich madder red. A most desirable Iris with a long blooming season. 3 for 25c. Each 10c
- LOUIS BEL (Den.)**—S. dark pansy violet; F. blackish purple. So rich and dark it appears to be black. EARLY. 3 for 50c. Each 20c
- LUCREZIA BORI (Schr.)** — A new LATE blooming deep yellow of immense size. Each \$3.50
- MAGENTA (Cay.)**—A lovely deep magenta red of distinctive coloring. DELICIOUS FRAGRANCE. 3 for 30c. Each 15c
- MAGNIFICA (Vilm.)**—A tall, bright, red toned bicolor of gigantic size. VERY FRAGRANT. One of the most popular. 3 for 25c. Each 10c

- MAJESTIC (Bliss)**—S. mauve; F. raisin purple. A very fine Iris. 3 for 25c. Each 10c
- MARESCHAL NEY (Wmson.)** — One of our most attractive dark reds. S. dark bronze red; F. rich velvety maroon with a brown orange beard. A dandy. 2 for 25c. Each 15c
- MARQUSETTE (Cay.)** — Lovely blossoms of light shrimp pink, which is most effective in clump. Each 20c
- MARY BARNETT (Cumb.)**—Large creamy lavender blue with gleaming orange beard. VERY FRAGRANT. Distinctive and lovely. 3 for 25c. Each 10c
- MARY GEDDES (Wash.)** — American Dykes Medal Winner of 1936. A golden bronze and salmon pink blend, with F. veined and overlaid red. A beauty. 32 in. Each 50c
- MARY GIBSON (Per.)**—A charming blend of rose, yellow and bronze with radiant orange beard. Tall. 3 for 25c. Each 10c
- MARY WILLIAMSON (Wmson.)** — LATE. S. milk white; horizontal falls of violet purple with a wide border of white. Ruffled and very attractive. FRAGRANT. 3 for 25c. Each 10c
- MASSENA (Cay.)** — A tall, large flowered, warm deep orchid pink. 2 for 25c. Each 15c
- MEDRANO (Vilm.)**—VERY LATE. A beautiful coppery claret red of real merit. GRAPE FRAGRANCE. 3 for 25c. Each 10c
- MESSALINE (Mil.)**—A tall striking, pink to red toned bicolor with falls attractively veined Extra large fine flowers. 3 for 60c. Each 25c
- MIDGARD (H. Sass)**—An exquisite combination of rose pink and golden yellow. Ruffled and adorable. Probably the most popular Iris I've ever grown. 3 for 25c. Each 10c
- MIDWEST (H. Sass)**—A ruffled novelty of unusual charm. A white background flushed and heavily peppered rose. 24 in. 3 for 25c. Each 10c
- MIDWEST GEM (H. Sass)**—One of the finest Irises I've ever seen. A large iridescent golden yellow with a faint flush of lilac on the falls and a broad deep yellow beard. 36 in. LATE Hon. Mention 1937 and a rating of 92. Each \$10.00
- MIDWEST PRIDE (H. Sass)**—A large flowered silky wine red purple that is extremely rich and showy. 3 for 50c. Each 20c
- MILDRED PRESBY (Farr)**—S. ivory white; F. velvety pansy purple. Style and individuality combine to make this a winner. LATE. FRAGRANT. 3 for 25c. Each 10c
- MISS ARAVILLA (H. Sass)** — One of the showiest things in the garden. S. bright coppery gold; F. red with vivid orange beard. 32 in. and branched from the ground up. Each \$1.00

- MME. HENRI CAYEUX (Cay.)**—A handsome blackish purple with an infusion of red. The F. are velvety and the S. have the appearance of watered silk. LATE. FRAGRANT. 3 for 30c. Each 15c
- MONSIGNOR (Vilm.)**—LATE. Rich deep violet with velvety falls. 3 for 25c. Each 10c
- MONTEREY (Mit.)**—LATE. Extra large dark bronzy maroon purple of super quality. 38 in. Especially recommended. 2 for 35c. Each 20c
- MOON MAGIC (Shull)**—A handsome smooth creamy yellow with luminous orange beard. Hon. Mention 1932. FRAGRANT. 3 for 50c. Each 20c

PICK OUT YOUR OWN COLLECTION

GROUP ONE

Any 15 from the following group
\$1.25

Clara Noyes	Andante
Amanecer	Zwanenburg
Indian Chief	Red Splendor
Folkwang	Dr. Chas. H. Mayo
Elsinore	Coronation
Blue Banner	Prairie Gold
Jack Rose	Onyx
Lona	Morning Splendor
Omaha	Mrs. Marion Cran
Rhea	Avatar
Wedgewood	Apache
Asia	Goldilocks
Hyacinthus	

GROUP TWO

Any ten from this group
\$1.25

Blue Velvet	Allies
Peaches	Nepenthe
Sachem	Waconda
My Maryland	Day Dream
Gentius	Night Shade
Blue Bonnet	Klamath
Cryso	Red Orchid
Rameses	Cinnabar
Baldwin	Shiwassee

- MORNING GLORY (Kirk.)**—A tall lovely Iris in a striking two toned violet, whose rich coloring is emphasized by a conspicuous orange beard. 2 for 25c. Each 15c
- MORNING SPLENDOR (Shull)** — Handsome large blossoms of finest quality. S. petunia violet. F. a shade deeper. The garden effect is dark red. Highly recommended. 3 for 25c. Each 10c

MRS. A. S. HOYT (J. Sass)—A charming novelty Iris. A bold white background dotted and veined rose pink with a heart shaped spot of white in center of the falls. 22 in. 3 for 25c.
Each 10c

MRS. HERBERT HOOVER (Home) — A luscious looking salmon pink and buff blend which in clump is really beautiful. Each..... 25c

MRS. MARION CRAN (Perry)—A tall, clear rose pink self of great beauty. 3 for 25c. Each 10c

MY MARYLAND (Sheets)—A beautiful brown toned giant. Tall and extra rugged. FRA-GRANT. Don't overlook it. 2 for 25c. Each... 15c

NS AND MAKE A NICE SAVING

GROUP THREE

Any Six for
\$1.25

Blackamoor	Noweta
Blue Monarch	Valor
Chromylla	Venus de Milo
Golden Bow	Zaharoon
Ozark Blue	

GROUP FOUR

Any Three
\$1.25

Amenti	Golden Light
Beotie	Oriana
Douglas	Mary Geddes

FALL BLOOMING COLLECTION

One Each of This Group
\$1.25

Southland	Sept. Skies
Eleanor Roosevelt	White Autumn King
Autumn Queen	Jean Siret
Autumn King	Sangreal
Dorcas Hutcheson	
Souv. de Lieut. Chavagnac	

NARANJA (Mit.)—The exciting new Orange Iris which stands unrivaled in color at this time. Large deep yellow flowers with falls overlaid orange. Hon. Mention 1937. Each.....\$5.00

NEBRASKA (H. Sass)—VERY LATE. Showy ruffled blossoms of richest dark yellow; the falls attractively veined reddish brown. 2 for 25c. Each 15c

- NEHAWKA (J. Sass)**—A novelty Iris of queerest coloring. A white background with the entire flower heavily peppered dark purple. 18 in. 2 for 25c. Each 15c
- NEON (Salb.)**—Very richly colored with golden bronze S. and velvety reddish falls. A big bright beard lends brilliance. Tall. LATE. Each \$1.25
- NEPENTHE (Conn.)**—Large fine blossoms of restful beauty. S. golden fawn; F. light violet, shading to iridescent lavender. Tall, LATE, and a wonderful bloomer. 2 for 25c. Each 15c
- NIGHT SHADE (Wmson.)**—An aptly named Iris bearing an abundance of huge dusky blue purple blossoms. Tall. FRAGRANT. 2 for 25c. Each 15c
- NINGAL (Ayers)**—A soothing blend of light golden tan and lavender blue. Golden throat and orange beard. Horizontal falls. 2 for 25c. Each 15c
- NORDIC (Kirk.)**—Large flowers of fine form and texture. S. yellow flushed heliotrope; F. red with broad orange beard. 36 in. Each 35c
- NOWETA (H. Sass)**—I believe this is the nearest approach to the much desired true pink. Large frilly flowers of jewel like beauty. 3 for 50c. Each 25c
- NUMA ROUMESTAN (Cay.)** — A gorgeous deep garnet red self with brilliant orange beard. LATE. FRAGRANT. 36 in. One of the reddest reds. 2 for 25c. Each 15c
- NURMAHAL (Nic.)**—A large dark brown Iris, similar to Grace Sturtevant. GRAPE FRAGRANCE. Each 25c
- OBERON (KoeH.)**—Large handsome flowers of smooth rose mauve. Very similar to San Gabriel, but quite hardy. 2 for 25c. Each 15c
- OCTOBER OPERA**—See fall bloomers.
- OKOBOJI (H. Sass)**—Ruffled and unique. Rich dark bronzy red, with an odd bronze beard. 3 for 30c. Each 15c
- OLD GOLD (H. Sass)**—Ruffled yellow and old gold. A good one. 3 for 25c. Each 10c
- OMAHA (H. Sass)**—A glowing coppery reddish rose with golden heart and bright orange beard. Large showy blossoms which add cheer to any garden. 3 for 25c. Each 10c
- ONYX (Wmson.)** — S. cream; F. violet red, edged cream. Recommended. 3 for 25c. Each 10c
- OPALINE (Wmson.)** — A lovely outstanding pink and yellow blend with pink predominating. Recommended. 2 for 25c. Each 15c
- ORIANA (H. Sass)**—A handsome, large pure white of excellent form. Very hardy and an Iris of real merit. Hon. Mention 1933. Each 75c

- OSSAR (H Sass.)**—A new dark red which is attracting considerable attention. A luminous blackish red self of fine form and substance. 30 in. Each \$2.50
- OTOE (Sass)**—An exceedingly rich velvety red toned Iris with burnt orange beard. 26 in. Lovely in clump. 3 for 25c. Each 10c
- OZARK BLUE**—A giant, clear medium blue self which has made a fine showing in my garden. 2 for 35c. Each 20c
- PARC DE NEUILLY (Verd.)**—LATE A very desirable clear pure violet self. 3 for 25c. Each 10c
- PEACHES (H. Sass)**—Large ruffled blossoms with S. of rosy apricot and yellow. Broad F. flushed and veined red. A conspicuous beauty. 3 for 30c. Each 15c
- PERSIA (Ayers)**—S. soft bluish gray; F. dark blue violet with a flush of soft brown at haft. A beautiful Iris which grows on you. 3 for 50c. Each 20c
- PINK OPAL (J. Sass)**—Very tall, with large round blossoms of smooth uniform pink. A fine outstanding pink. 2 for 25c. Each 15c
- PINK SATIN (J. Sass)**—The Iris which set the world agog in 1931. A soft iridescent pink of graceful form and purest coloring. Tall. Each 25c
- PIONEER**—A tall, clear glowing red purple. Recommended. 3 for 25c. Each 10c
- PLUIE D' OR (Cay.)**—A tall, pure golden yellow self with rich orange beard. Dykes Medal Winner of 1928. 3 for 30c. Each 15c
- PONGEE (Bret.)**—A dandy Iris in true pongee color. Tall. 3 for 25c. Each 10c
- PRAIRIE GOLD (H. Sass)** — LATE. A vivid yellow self. Low. 3 for 25c. Each 10c
- PRES. PILKINGTON (Cay.)** — A large handsome Iris of finest quality. S. golden bieve; F. rosy lilac, shading to golden brown at heart with a halo-like border of same. 3 for 50c. Each 20c
- QUIVERA (J. Sass)**—A crisply ruffled beauty in buff and salmon pink, with falls striped hessian red. Hon. Mention 1932. 2 for 25c. Each 15c
- QUEEN CATERINA (Sturt.)**—A light frosty lavender self. 3 for 25c. Each 10c
- RAMESES (H. Sass)** — A gorgeous coppery pink and apricot blend. Dykes Medal 1932. One of the world's best Irises. 2 for 25c. Each 15c
- REALM (Baker)**—LATE. A tall, handsome light blue self with bright gold beard. 3 for 25c. Each 10c
- RED DOMINION (Ayers)** — A striking rich dark red with stylish flaring falls. 3 for \$1.00. Each 50c

- RED ORCHID (J. Sass)**—A sparkling new color gem for the EARLY garden. Nearly a ruby red self with vivid orange beard. FRAGRANT. Recommended. 3 for 30c. Each 15c
- RED RADIANCE (Grin.)**—A glorious rich red self in which no one could be disappointed. Each 35c
- RED SPLENDOR (Sturt.)**—Very ruffled, rich dark red self, with horizontal F. In a class by itself. 3 for 25c. Each 10c
- RED WING (H. Sass)**—Large broad petaled flowers of lustrous brown red. A universal favorite. 2 for 25c. Each 15c
- RHEA (Wmson.)**—Extra large and very fine. S. smoky rose; F. crushed raspberry pink, tinted and veined golden brown at haft. Rich red orange beard. 3 for 25c. Each 10c
- RHEINFELS (G. & K.)**—White, softly tinted lavender at throat and tips of standards. A dainty refined appearing flower. 3 for 25c. Each 10c
- RHEINGAUPERLE (G. & K.)**—FRAGRANT. A lovely wild rose pink. 3 for 50c. Each 20c
- RHINE NIXE (G. & K.)**—S. milk white; F. plum color. A dandy. 3 for 25c. Each 10c
- ROB ROY (Kirk.)**—A flashy red bicolor with vivid orange beard. MED. EARLY. 2 for 35c. Each 20c
- ROMANCE (Mur.)**—A smoothly blended self of gold and old rose. SWEETLY FRAGRANT. 3 for 25c. Each 10c
- ROMOLA (Bliss)** — Magnificent large bright blossoms. S. lilac rose; F. burgundy red. Tall. FRAGRANT. Each 10c
- ROSE MARIE (Cay.)**—Richest wine purple, with distinctive white throat and veining. 36 in. LATE. Fine. 3 for 50c. Each 25c
- ROTA (G. & K.)**—A perky, bright carmine pink of distinctive charm. EXTREMELY FRAGRANT. 3 for 25c. Each 10c
- ROYAL COACH (H. Sass)**—Another of those thrilling new yellow plicatas from the famous Sass brothers. This one has S. and F. of yellow, with brown trimming. 36 in. A real beauty. Each \$10.00
- RUBEO (Mit.)**—LATE. A tall velvety maroon bicolor. Each 50c
- SACHEM (Loom.)**—Large distinctive blossoms of bronzy reddish brown. 36 in. 2 for 25c. Each 15c
- SANDAKAN (Wmson.)**—A handsome variety. S. coppery tan and lilac; F. velvety brownish red. Especially recommended. 3 for 25c. Each .. 10c
- SANDALWOOD (H. Sass)**—A grand new Iris in the color class of Far West. S. soft golden fawn; F. a shade browner and faintly tinted lavender. 34 in. Each \$5.00

- SAN GREAL**—See fall bloomers.
- SAN LUIS REY (Mit.)** — A fine large well-known red, set off by a bright gold beard. 2 for 25c. Each 15c
- SANTA BARBARA (Mohr.-Mit.)**—The perfect light blue Iris, were it not a bit tender. Recommended for the south. 2 for 25c. Each 15c
- SELENE (Ccn.)**—A gigantic hardy white with light yellow beard and golden green veining at throat. Outstanding for its leather like texture and fine reliable habits. 2 for 25c. Each 15c
- SEMINOLE (Farr)**—A fine old favorite in low velvety red. 3 for 25c. Each 10c
- SEPT. SKIES**—See fall bloomers.
- SHIRVAN (Loom.)**—The richness of this Iris is indescribable. S. silky golden brown; velvet like F. of rich red brown with a broad margin to match S. 30 in. Each 35c
- SHIWASSEE (Burch.)**—An Iris which should be in every garden. Rich dark red with a violet undertone. Bright orange beard. Outstanding in every respect. 2 for 25c. Each 15c
- SINDJKHA (Sturt.)**—A fine LATE Iris which seems to have been overlooked. A large silvery mauve blend of SWEETEST FRAGRANCE. Tall. Each 15c
- SIR LAUNCELOT (J. Sass)**—One of the most brilliant of the newer flame red browns. 28 in. Each \$1.50
- SIR MICHAEL (Yeld)**—Long recognized as one of the world's best Irises. S. silky azure blue; F. purple velvet over laid golden brown. Vivid red orange beard. 2 for 35c. Each 20c
- SNOW WHITE (Sturt.)** — A glistening snow white which I heartily recommend. FRAGRANT. 3 for 25c. Each 10c
- SOUTHLAND**—See fall bloomers.
- SPARK (Nic.)**—S. coppery red; F. dark velvety maroon. Broad orange beard. 2 ft. Really red. Fine. 2 for 25c. Each 15c
- SPOKAN (J. Sass.)**—A huge coppery red brown blend, with golden heart and gleaming orange beard. Hon. Mention 1936. A super Iris. Each \$1.50
- ST. LOUIS (Wies.)**—A handsome lustrous dark violet, with bronzy orange beard. Each 50c
- SUN GOD (J. Sass)**—A large flowered light silky yellow, with falls striped light brown. 28 in. 3 for 25c. Each 10c
- SUSAN BLISS (Bliss)**—A tall lovely orchid pink of elegant form and finish. Especially recommended. 3 for 25c. Each 10c
- TALISMAN (Mur.)**—A dainty blend of apricot, yellow and pink. Each 15c

- TENEBRAE** (Bliss)—Large and FRAGRANT. S. rich violet maroon; F. velvety blackish purple, with brown infusion at heart. Award of Merit. 3 for 25c. Each 10c
- THE BLACK DOUGLAS** (J. Sass)—Unquestionably the peer of the black purples. Strong 30 in. stalks simply loaded with glorious dark blossoms which in clump is unforgettable. Each 75c
- THEODOLINDA** (Ayers)—A magnificent huge flowered plicata which is perfectly hardy. The massive flowers are satiny white with a half inch border of blue penciling on the S. Each 35c
- THURATUS** (H. Sass)—A large dark red purple self with burnt orange beard. Each..... 15c
- TOKAY** (Nic.)—An exquisite beauty in copery pink and gold. 2 for 25c. Each 15c
- TROPIC SEAS** (Shull)—A beautiful tall dark blue bicolor. 3 for 25c. Each 10c
- TROSTRINGER** (H. Sass)—One of the most winsome and delicately tinted of all pinks. 3 for 25c. Each 10c
- TRUE DELIGHT** (Sturt.)—Pure white with margins buttonholed orchid pink. Tall, free flowering and VERY FRAGRANT. 3 for 30c. Each 15c
- ULTRA**—See fall bloomers.
- VALOR** (Nic.)—48 in. One of the finest Irises in commerce today. A deep rich blue violet with brilliant orange beard. Perfect in every detail. FRAGRANT. No garden is complete without Valor. 3 for 50c. Each 25c
- VELVET KING**—Among the 1938 introductions is a fine Jacob Sass seedling replacing a now obsolete variety of the same name. A gorgeous flame red bronze with a dazzling brilliance which tops the entire garden. 34 in. Large flowered, hardy, free flowering and truly a Velvet King. A limited quantity of good strong rhizomes specially priced at 3 for \$5.00. Each \$2.50. Only three to a customer.
- VENUS DE MILO** (Ayers)—A beautiful radiant white, having every requisite of the perfect Iris. FRAGRANT. 2 for 40c. Each 25c
- VESPER GOLD** (Wmson.)—A tall golden buff and honey colored blend. FRAGRANT. Each 10c
- VIRGINIA MOORE** (Shull)—LATE. Deep yellow with veined falls. Each 10c
- WACONDA** (H. Sass)—Large flowers of glowing fuschia red with a reflection of metallic blue. Hon. Mention 1931. Always a sensation. 3 for 40c. Each 20c
- WAR EAGLE** (J. Sass)—A thrilling gigantic red in a class by itself. Tall. Each \$1.00

- WAVELAND (Lage)**—A ruffled beauty of exquisite coloring. S. coppery ash rose; F. rosy lilac at center, shading to rich old rose. Golden heart and brilliant orange beard. 30 in. You'll love it. 3 for 75c. Each 35c
- WEDGEWOOD (Dykes)** — Rich wedgewood blue with a pronounced white beard. 32 in. 3 for 25c. Each 10c
- WHITE AUTUMN KING**—See fall bloomers.
- WILD ROSE (Sturt.)**—Dainty flowers of wild rose pink with a pure white beard. 2 for 25c. Each 15c
- WINNESHIEK (Egel.)**—Large handsome flowers of richest dark blue violet. 36 in. Each 25c
- WOODLAND (Hall)**—Extra tall with huge ruffled flowers of graceful beauty. A clear soft pinkish violet self. Especially recommended. 2 for 25c. Each 15c
- YATAGHAN (Wmson.)**—A dandy rich purplish red with brown reflections and deep yellow beard. Large. FRAGRANT. 3 for 25c. Each 10c
- YELLOW HAMMER (Denis)**—EARLY. 24 in. A deep rich yellow which may be seen bobbing in the breeze a block away. 3 for 30c. Each... 15c
- YOLANDE (Mil.)**—Distinctly outstanding, with giant blossoms of rich dark blue. Tall. 3 for 30c. Each 15c
- ZAHAROON (Dykes)** — A beautiful flower of finest form, silky finish and exquisite coloring. A blended self of fawn and lilac with a golden suffusion which shades into a golden margin. Brilliant orange beard. LATE and a prodigious bloomer. Each 25c
- ZWANENBURG (Denis)** — EARLY. (Pogocyclus). Large flowers of amber, olive green and gold, with irregular splashes of maroon. Always dependable. FRAGRANT. 3 for 25c. Each 10c

Fall Blooming Iris

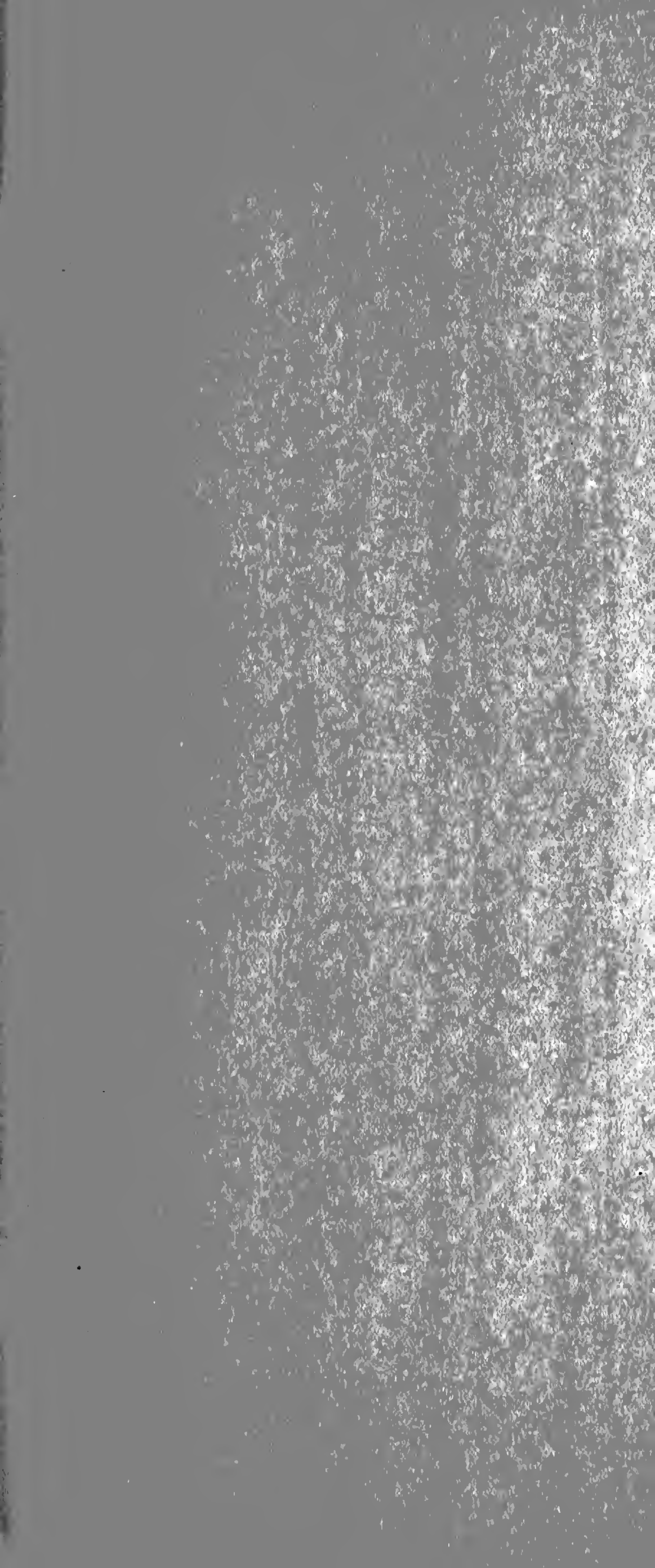
A newly developed race of Iris coming in dwarf, intermediate and tall bearded types. Blooming in early spring and again in autumn, creating new interest at a time when our garden enthusiasm is low. These naturally are best adapted to those sections of the country where the falls are long and mild, though favorable reports have been received from customers in the far northeast. It is quite essential that they are watered during the summer to help produce new growth and vigor for the second crop of blossoms. They are all rugged varieties, and make an excellent spring showing, blooming here at tulip time.

- AUTUMN GLEAM (H. Sass)**—A uniform light yellow with velvety chrome yellow beard. 24 in. Each 25c
- AUTUMN HAZE (H. Sass)**—Large flowered and orchid like in appearance. S. soft lavender; F. orchid deepening at center with an effective orange beard. 30 in. Very fine. Each ... 35c
- AUTUMN KING (H. Sass)**—The pioneer fall bloomer. A popular blue purple bicolor of rugged growth. 3 for 25c. Each 10c
- AUTUMN QUEEN (H. Sass)**—Although this is a dwarf in habits of growth it has lovely pure white blossoms of finest form and good size. 2 for 25c. Each 15c
- DORCAS HUTCHESON (Sass-McDade)** — S. silky lavender; F. dark rich violet with a halo-like margin to match S. FRAGRANT. 20 in. An abundant bloomer. 3 for 25c. Each... 10c
- ELEANOR ROOSEVELT (Sass-McDade)** — A stunning dark rich violet with blackish velvety falls. 3 for 25c. Each 10c
- FRANKLIN ROOSEVELT (J. Sass)** — A tall, rich dark maroon purple of fine large size. Each 50c
- JEAN SIRET (Andre)**—A trim medium yellow dwarf, with vivid orange beard. FRAGRANT. 2 for 25c. Each 15c
- OCTOBER OPERA (Sass-Hill)**—A rich wine red purple, similar to the ever popular old Opera. 3 for 60c. Each..... 25c
- SANGREAL (J. Sass)**— A lovely clear soft yellow of fine form and finish. Rich orange beard and golden iridescence. FRAGRANT. 3 for 50c. Each..... 25c
- SEPT. SKIES (Sass-Hill)** — A large flowered rich deep purple especially recommended for the South where it is reputed to be practically an ever bloomer. 2 for 25c. Each..... 15c
- SOUTHLAND (H. Sass)**—A striking deep yellow with a broad vivid orange beard. 26 in. A dandy. 3 for 50c. Each 25c

- SOUV. DE LIEUT. CHAVAGNAC (Andre) —**
 Another dwarf of most dependable habits. A uniform violet purple which makes a fine companion to the yellow, Jean Siret. Both are French productions. 2 for 25c. Each..... 15c
- ULTRA (H. Sass) —** A blue bicolor of extra stylish form. S. clear light blue; F. velvety blue purple. 18 in. 2 for 25c. Each..... 15c
- WHITE AUTUMN KING (H. Sass)—**A large iridescent pearly white with lemon beard and gold veining at haft. FRAGRANT. 2 for 25c. Each 15c

**Orders mailed before June 1st should be
addressed to 1351 S. Hydraulic Ave.**





*"It's Iris time! It's Iris time! Twixt
Tulip-days and Rose,*

*The garden walk in Iris time with
purple splendor glows.*

*The leafy spears are on parade, the
bugles of the June*

*Summon each bud and bloom and
blade with sturdy marching tune."*